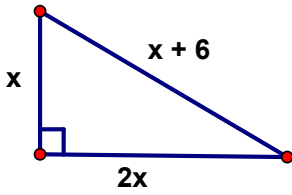


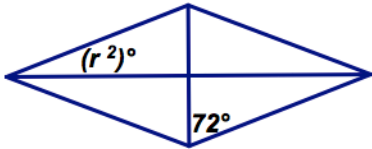
2. Find the value of x . Round to thousandths.



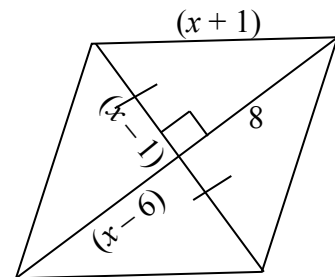
3. Is a triangle with sides 12, 18 and 20 acute, right, or obtuse?

Find the value of each variable.

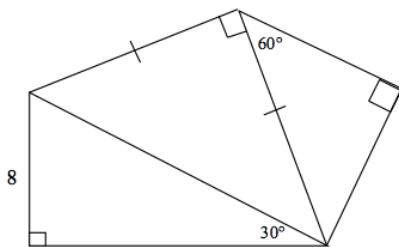
4. The shape is a rhombus.



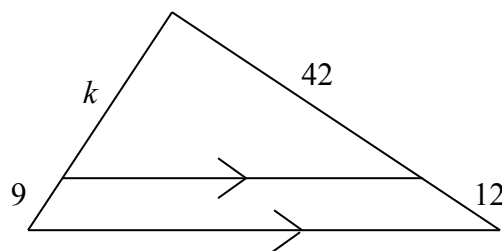
5. Identify the quadrilateral



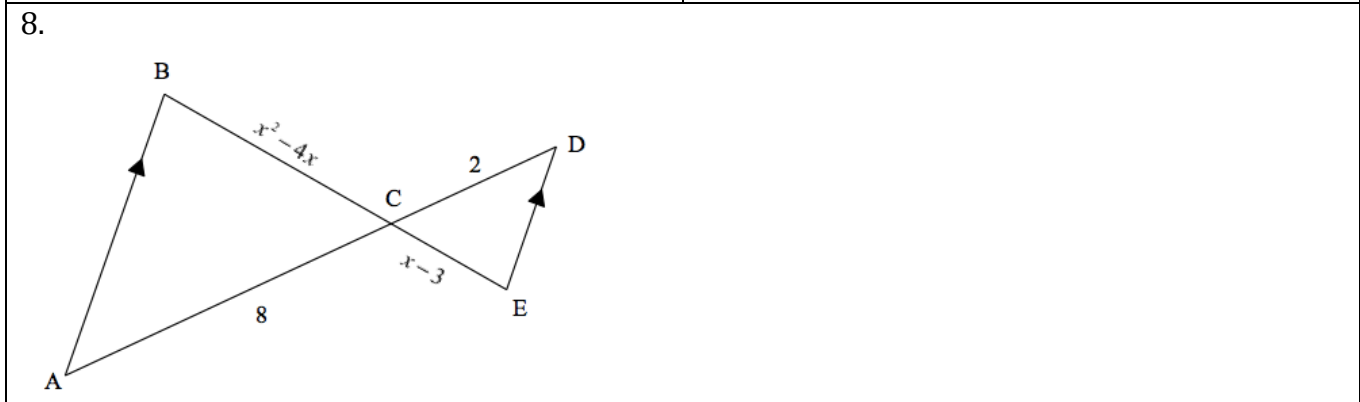
6.



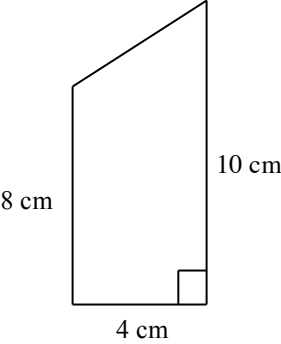
7.



--	--



9. Find the **EXACT** area and perimeter of the composite figure.



Circle the best response for each of the following statements about parallelograms.

- 10. The diagonals of a rectangle bisect each other. ALWAYS SOMETIMES NEVER
- 11. Opposite angles of a rhombus are supplementary. ALWAYS SOMETIMES NEVER
- 12. A square is a rhombus. ALWAYS SOMETIMES NEVER
- 13. A parallelogram has only one pair of parallel sides. ALWAYS SOMETIMES NEVER

14. Find the measures of one interior and one exterior angle in this regular polygon.



15. Given LION is a rectangle, prove $\triangle NLI$ is congruent to $\triangle ION$.

